



EDITORIAL

- Intersecting Vectors of Basic Science Research and Clinical Medicine: LOX-1? J. Brown, S. Nallamshetty, and J. Plutzky (see article on page 550) 499

PERSPECTIVES

-  Northern Light: A Commentary on the 2009 Canadian Guidelines for the Diagnosis and Treatment of Dyslipidemia and Prevention of Cardiovascular Disease in Adults E.J. Schaefer 502
- Statin Therapy for Low-LDL, High-hsCRP Patients: From JUPITER to CORONA P.M. Ridker 505

Q&A

-  Microtechnology in the Clinical Laboratory: Will It Solve Analytical Problems, and When Will It Make an Impact? P. Wilding 508

CLINICAL CASE STUDY

- Accident or Arson: Is CO-Oximetry Reliable for Carboxyhemoglobin Measurement Postmortem? K.N. Olson, M.A. Hillyer, J.S. Kloss, R.J. Geiselhart, and F.S. Apple 515

COMMENTARIES

- T.G. Rosano 519
- B. Magnani 520

CLINICAL CHEMISTRY GUIDE TO SCIENTIFIC WRITING

- The Abstract and the Elevator Talk: A Tale of Two Summaries T.M. Annesley 521


REVIEW

- Identification of Pathogens by Mass Spectrometry Y.-P. Ho and P.M. Reddy 525

OPINIONS

- Criteria for Scientific Evaluation of Novel Markers: A Perspective K.G.M. Moons 537
- Early Prostate Cancer Antigen-2: A Controversial Prostate Cancer Biomarker? E.P. Diamandis 542

POINT/COUNTERPOINT

- Point: The Reporting of Estimated Glucose with Hemoglobin A_{1c} D.B. Sacks, R.M. Bergenstal, and S. McLaughlin  545

- Counterpoint: The Reporting of Estimated Glucose with Hemoglobin A_{1c} I.S. Young  547

ARTICLES

LIPIDS, LIPOPROTEINS, AND CARDIOVASCULAR RISK FACTORS

- LOX Index, a Novel Predictive Biochemical Marker for Coronary Heart Disease and Stroke N. Inoue, T. Okamura, Y. Kokubo, Y. Fujita, Y. Sato, M. Nakanishi, K. Yanagida, A. Kakino, S. Iwamoto, M. Watanabe, S. Ogura, K. Otsui, H. Matsuda, K. Uchida, R. Yoshimoto, and T. Sawamura (see editorial on page 499) 550

- Risk Factors for Near-Term Myocardial Infarction in Apparently Healthy Men and Women B.G. Nordestgaard, A.S. Adourian, J.J. Freiberg, Y. Guo, P. Muntendam, and E. Falk 559

DRUG MONITORING AND TOXICOLOGY

- Iothalamate Quantification by Tandem Mass Spectrometry to Measure Glomerular Filtration Rate J.C. Seegmiller, B.E. Burns, A.H. Fauq, N. Mukhtar, J.C. Lieske, and T.S. Larson 568

- Automated Mass Spectral Deconvolution and Identification System for GC-MS Screening for Drugs, Poisons, and Metabolites in Urine M.R. Meyer, F.T. Peters, and H.H. Maurer 575

- Correlation Between Methylphenidate and Ritalinic Acid Concentrations in Oral Fluid and Plasma E. Marchei, M. Farré, R. Pardo, O. Garcia-Algar, M. Pellegrini, R. Pacifici, and S. Pichini 585

MOLECULAR DIAGNOSTICS AND GENETICS

- Interlaboratory Diagnostic Validation of Conformation-Sensitive Capillary Electrophoresis for Mutation Scanning C.J. Mattocks, G. Watkins, D. Ward, T. Janssens, E.A.J. Bosgoed, K. van der Donk, M.J. Ligtenberg, B. Pot, J. Theelen, N.C.P. Cross, H. Scheffer, and G. Matthijs 593

continued

ARTICLES, *continued*

MicroRNA-21 Is Induced Early in Pancreatic Ductal Adenocarcinoma Precursor Lesions
M. Chalret du Rieu, J. Torrisani, J. Selves, T. Al Saati, A. Souque, M. Dufresne, G.J. Tsongalis, A.A. Suriawinata, N. Carrère, L. Buscail, and P. Cordelier 603

Perioperative Gene Expression Analysis for Prediction of Postoperative Sepsis C. Hinrichs, K. Kotsch, S. Buchwald, M. Habicher, N. Saak, H. Gerlach, H.-D. Volk, and D. Keh 613

Quantifying *EGFR* Alterations in the Lung Cancer Genome with Nanofluidic Digital PCR Arrays
J. Wang, R. Ramakrishnan, Z. Tang, W. Fan, A. Kluge, A. Dowlati, R.C. Jones, and P.C. Ma 623

PROTEOMICS AND PROTEIN MARKERS

Impact of Increased Body Mass Index on Accuracy of B-Type Natriuretic Peptide (BNP) and N-Terminal proBNP for Diagnosis of Decompensated Heart Failure and Prediction of All-Cause Mortality
R.H. Christenson, H.M.E. Azzazy, S.-H. Duh, S. Maynard, S.L. Seliger, and C.R. deFilippi 633

High-Sensitivity Cardiac Troponin T for Early Prediction of Evolving Non–ST-Segment Elevation Myocardial Infarction in Patients with Suspected Acute Coronary Syndrome and Negative Troponin Results on Admission E. Giannitsis, M. Becker, K. Kurz, G. Hess, D. Zdunek, and H.A. Katus 642

Relation of Natriuretic Peptides and Midregional Proadrenomedullin to Cardiac Chamber Volumes by Computed Tomography in Patients without Heart Failure: From the ROMICAT Trial Q.A. Truong, E. Siegel, M. Karakas, J.L. Januzzi, Jr., F. Bamberg, A.A. Mahabadi, S. Dasdemir, T.J. Brady, A. Bergmann, J. Kunde, J.T. Nagurney, U. Hoffmann, and W. Koenig 651

BRIEF COMMUNICATIONS

New Serology Assays Can Detect Gluten Sensitivity among Enteropathy Patients Seronegative for Anti-Tissue Transglutaminase E. Sugai, H.J. Hwang, H. Vázquez, E. Smecuol, S. Niveloni, R. Mazure, E. Mauriño, P. Aeschlimann, W. Binder, D. Aeschlimann, and J.C. Bai 661

Association of Apolipoprotein B with Incident Type 2 Diabetes in an Aboriginal Canadian Population
S.H. Ley, S.B. Harris, P.W. Connelly, M. Mamakeesick, J. Gittelsohn, T.M. Wolever, R.A. Hegele, B. Zinman, and A.J. Hanley 666

CITATION CLASSIC

It's about the Journey, Not the Destination: The Birth of Radioimmunoassay T.M. Annesley 671

LETTERS TO THE EDITOR

Quaere Verum A.C. George, T.C. Long, and H.R. Garner 673

Copeptin Response to Clinical Maximal Exercise Tests M.T. Maeder, D. Staub, M.H. Brutsche, N. Arenja, T. Socrates, M. Reiter, J. Meissner, N.G. Morgenthaler, A. Bergmann, J. Struck, and C. Mueller 674

Coprevalence of Autoantibodies to Cardiac Troponin I and T in Normal Blood Donors
M. Adamczyk, R.J. Brashear, and P.G. Mattingly 676

Screening Panels for Detection of Monoclonal Gammopathies: Confidence Intervals C.J. Pretorius, J.P.J. Ungerer, U. Wilgen, and S. Klingberg 677

In Reply J.A. Katzmann, R.A. Kyle, J. Benson, D.R. Larson, M.R. Snyder, J. Lust, S.V. Rajkumar, and A. Dispenzieri 679

CORRECTION

In Reply K.L. Schnabl, P.C. Chan, and K. Adeli 681

CLINICAL CHEMIST

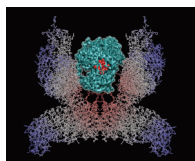
Clinical Chemistry: A Greater Emphasis on Proteomics N. Rifai 682

Unveiling the Right Side
Joan Miró and I. N. Tryding 683

continued

ACCENT®—CONTINUING EDUCATION CREDIT FOR READERS OF CLINICAL CHEMISTRY

For more information go to
<http://www.aacc.org/applications/ccjaccent>



ON THE COVER Scientists are investigating ways to develop effective oral insulin therapies. One such model is a vitamin B₁₂–insulin conjugate bound to transcobalamin II and is shown here docked in the insulin receptor. The discovery of easier ways to deliver insulin into the blood stream would improve the lives of the millions of individuals living with diabetes. This month's issue of *Clinical Chemistry* contains 4 articles related to diabetes. The first 2 articles provide readers with a point/counterpoint discussion of the value of reporting estimated glucose along with Hb A_{1c}. Next is an article on the association of apolipoprotein B with incident type 2 diabetes. Lastly, the development of the first radioimmunoassay for insulin led to a Nobel Prize and is chronicled in this month's Citation Classic feature. (See pages 545, 547, 666, and 671.) Image reproduced with permission from Damian G. Allis and Robert P. Doyle, Department of Chemistry, Syracuse University.

Color figures for Reviews sponsored by Department of Laboratory Medicine, Children's Hospital Boston.



Clinical Chemistry podcast available at
<http://www.clinchem.org/>

Clinical Chemistry Journal Club

Selected articles made freely available, including helpful slides and key points for discussion in your Journal Club.

LOX Index, a Novel Predictive Biochemical Marker for Coronary Heart Disease and Stroke N. Inoue, T. Okamura, Y. Kokubo, Y. Fujita, Y. Sato, M. Nakanishi, K. Yanagida, A. Kakino, S. Iwamoto, M. Watanabe, S. Ogura, K. Otsui, H. Matsuda, K. Uchida, R. Yoshimoto, and T. Sawamura
<http://www.clinchem.org/cgi/content/full/56/4/550>

Access the article by using the link above and selecting the Journal Club link in the right-hand column.



Clinical Chemistry and AACC are now on Twitter, Facebook, and LinkedIn. Be a part of our community and receive updates on the latest issues, upcoming articles, podcasts, and more!